



# Office 2010 Pack Manual

---

## Product Manual

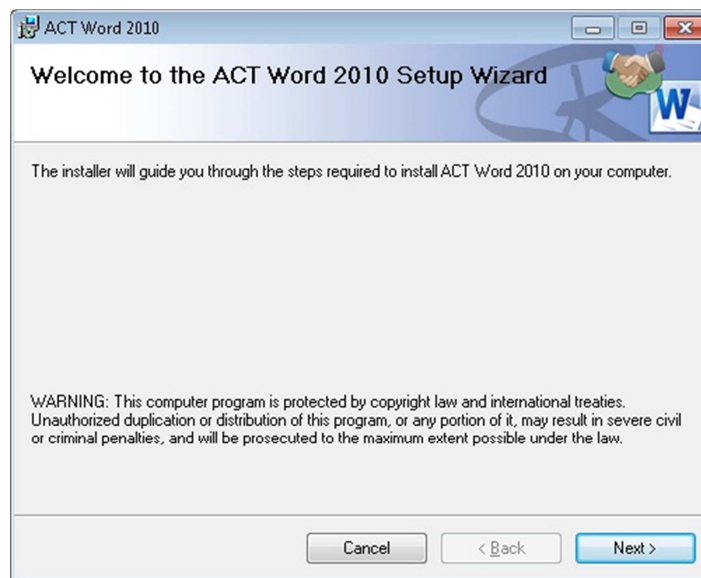
DesignR1 Software, LLC.



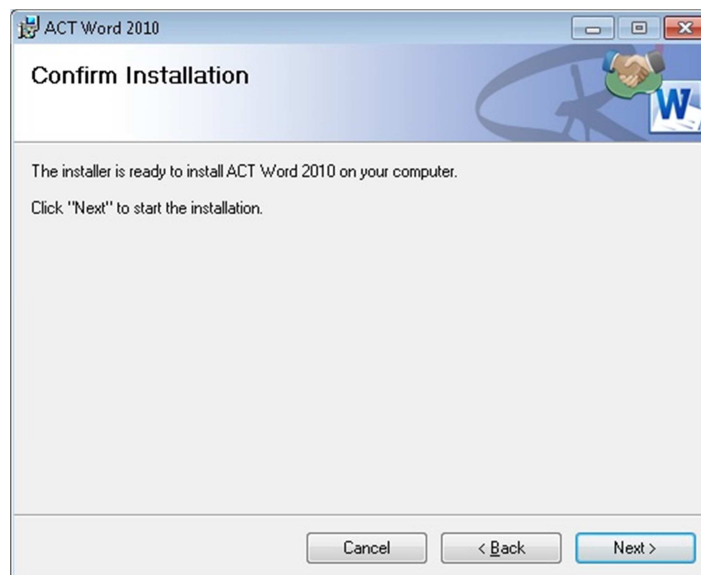
## Office 2010 Pack

### Installation

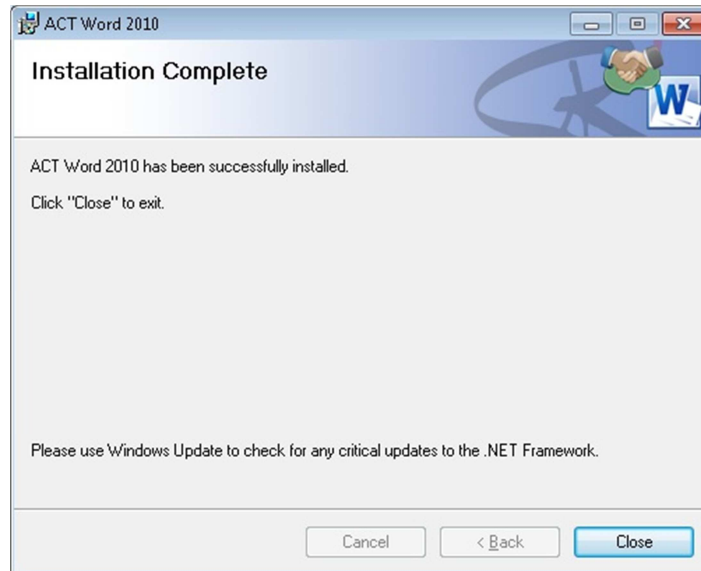
1. Download the plug-in at <http://www.designr1.com/downloads/ACTWord2010Setup.msi>
1. Before installing, ensure you are logged in to Windows as a user with local administrative privileges. It is recommended you disable UAC in Windows before install. [Click here](#) for instructions on this subject.
2. Close ACT! and any Microsoft Office programs.
3. Run the installer



4. Press Next



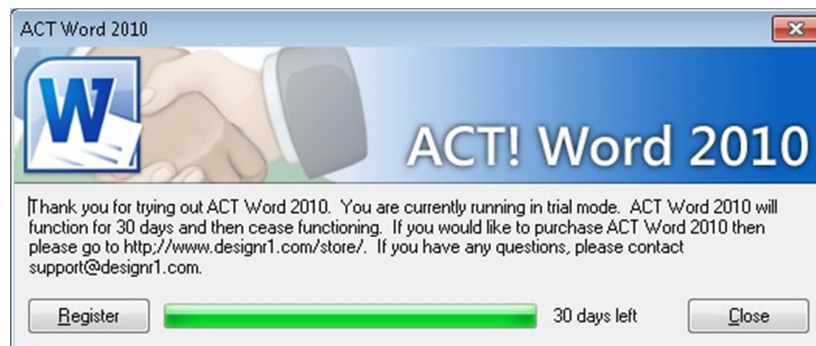
5. Press Next to install



6. Press Close
7. Installation is now complete

#### Registration

1. Start up ACT!
2. You will be greeted with a Registration screen for the plug-in
  - a. Note: The program starts as a 30 day free trial, if you press cancel button the registration window will close and you will continue to ACT! with the plug-in in trial mode



3. Press Register
4. Fill in the Serial and the rest of the registration information

A screenshot of the "ACT Word 2010 Registration" dialog box. The dialog has a title bar with the text "ACT Word 2010 Registration" and a close button (X). The main area contains several input fields: "Serial:" (one line), "First and Last Name:" (two lines), "Company:" (one line), "Address:" (two lines), "City:" (one line), "State and Zip:" (two lines), "Country:" (one line), "Phone:" (one line), and "Email:" (one line). At the bottom left, there is a checkbox labeled "Snap-in-Tools Registration". At the bottom right, there is a button labeled "Register".

5. Press Register
  - a. Note: you must be online to register, it may take a few minutes while your computer contacts our server
6. Press Close
7. Registration is complete

## Features

The Office 2010 Pack is a simple plugin which will allow you to use Microsoft Word 2010, Excel 2010, and Outlook 2010 with any version of ACT! which supports Office 2007. Simply install the plugin, and go to your preferences to select Microsoft Word as your word processor and Outlook as your email client.

After install there will be no visible changes to any of your programs.

## Support

If you are experiencing problems please contact our support team at:  
[support@designr1.com](mailto:support@designr1.com)